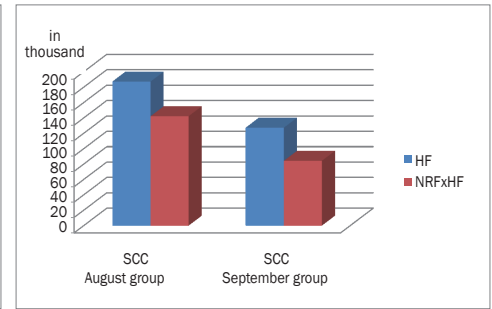
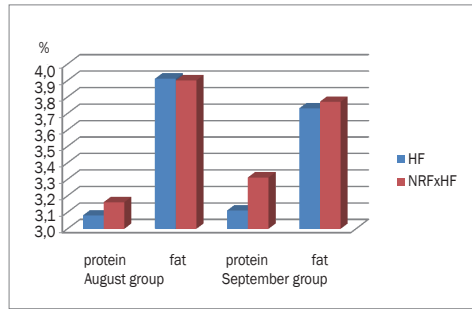
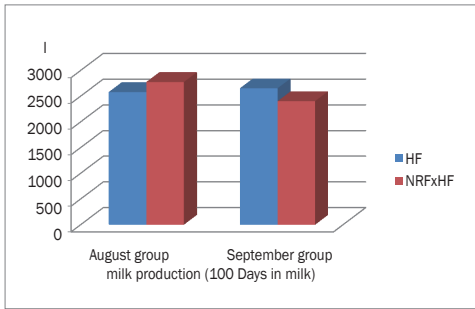


Results from a Farm with 1200 cows in Niedersachsen, Germany with Norwegian Red crosses



Milk production

Milk kg equal

Fat equal

Protein 0,2 %-points higher

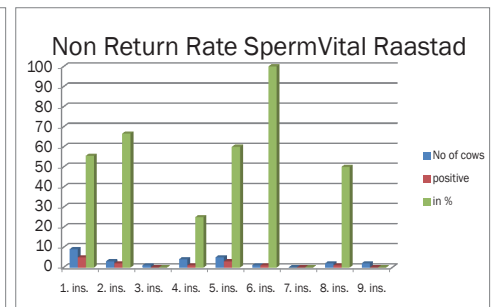
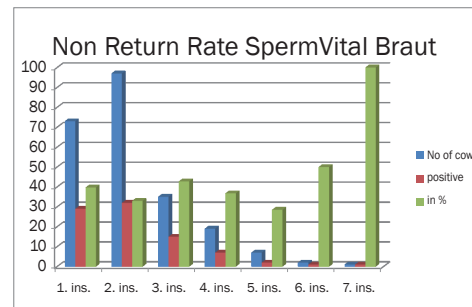
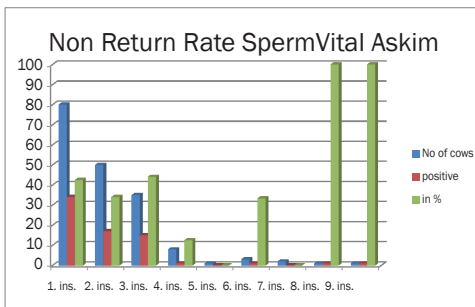
SCC 40 000 lower

Non Return Rate

Non Return Rate in the summer

from Ø 20 % normal

to 41 % with SpermVital



On the farm with 1200 cows SpermVital has been used in the summer with lots of doses. There were 3 different bulls of the Norwegian Red breed selected. SpermVital was used in cows and heifers not regarding the number of inseminations. As shown in the last figure there were gained great advantages by the use of SpermVital. Especially in the summertime, when the normal Non-Return-Rate on this Farm was only around 20 %, the use of SpermVital brought an advantage of roughly 20 %-points.

